



How to activate your Emergency Guarantee

Step-by-step guide

frontera^f and Lumiposa[®] 625 FS
TRATAMENT INSECTICID SĂMÂNȚĂ

Step 1. Register on the platform

You can register on the web-platform through the official website using your email.

Note: Confirmation code may appear in spam, check all folders please.

frontera.digifarm.io/en



Step 2. Add your field(s) in two actions

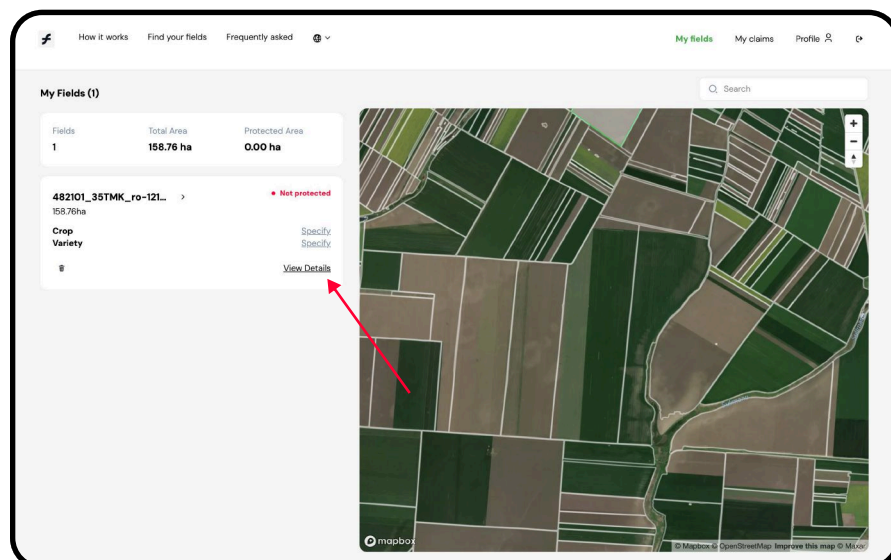
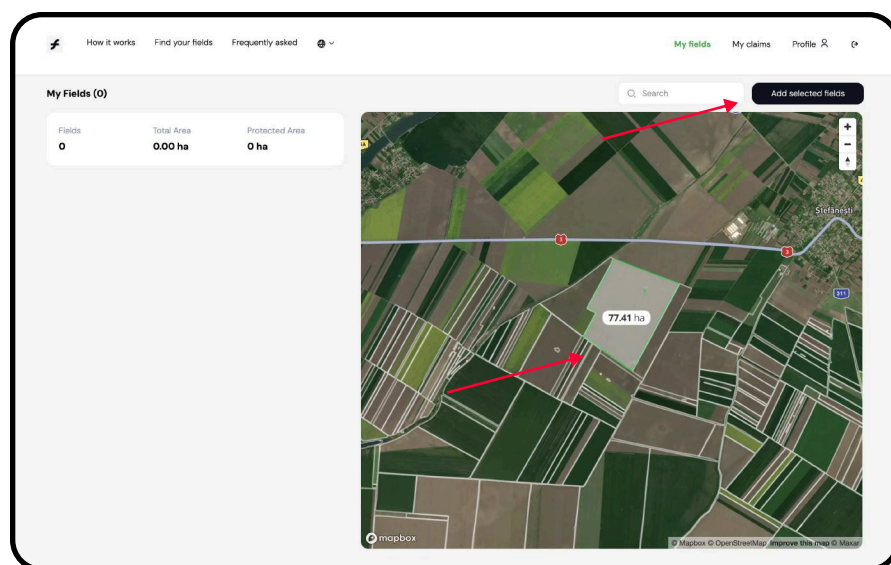
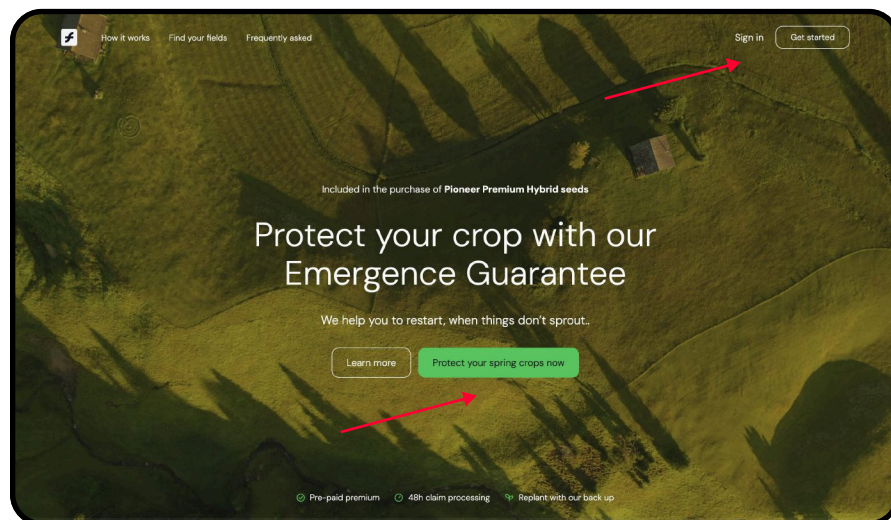
Select your field(s) on the map (1) and add it to "My Fields" using "Add selected fields" button.

<https://frontera.digifarm.io/en/fields-overview>

Step 3. Open Field Profile

After field(s) are added to "My Fields" all required details must be specified. To open a field profile, use the "View details" link.

<https://frontera.digifarm.io/en/fields/{ID}/field-detail>





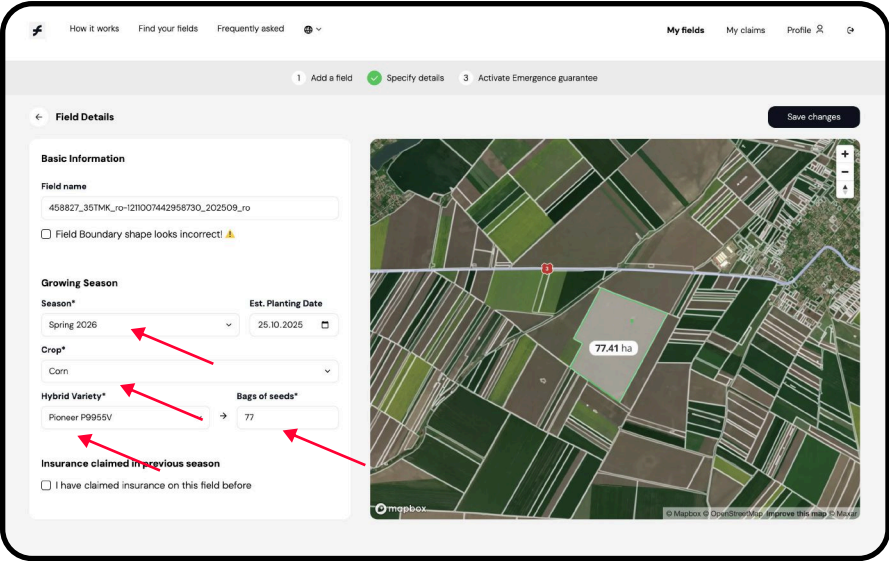
Step 4. Specify field(s) details

Please provide information for all the selected fields:
“Season”, “Crop”, “Hybrid” and “Bags of Seed”.

It's also important that you declare whether the boundary representing your field is correct. If it's not, an admin will update it and the system will ask you to review again.

Note: Your seed amount must be correlated with your field's area in hectares. In case of discrepancy, please contact our support team; support@fronterax.io

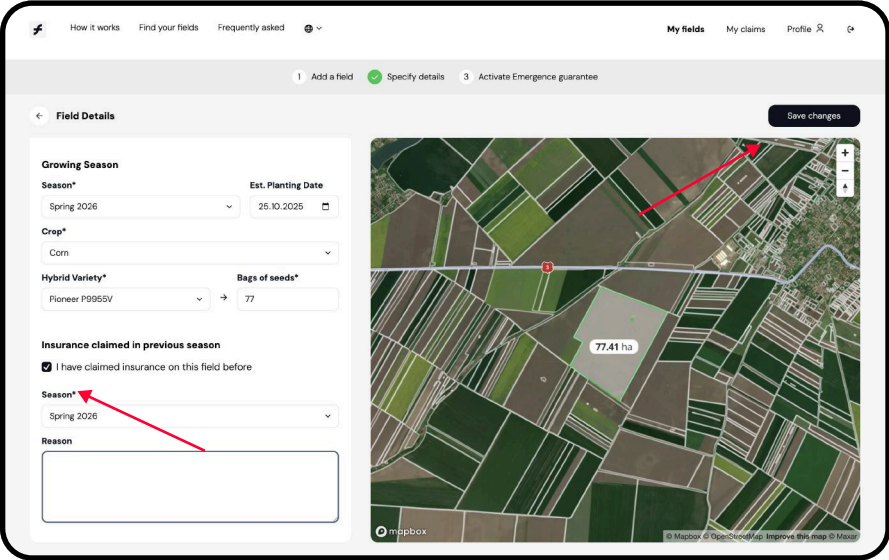
<https://frontera.digifarm.io/en/fields/{ID}/field-form>



Step 5. Declare Previous Insurance Claims

Declare if you had previous resowing insurance claims on each field before. Once all the information is filled in, save your changes using the "Save Changes" button.

<https://frontera.digifarm.io/en/fields/{ID}/field-form>

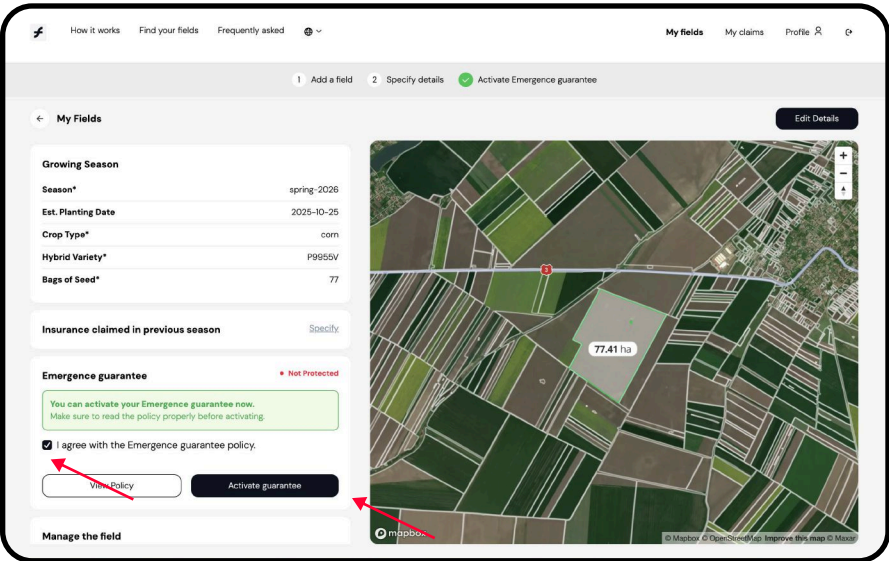


Step 6. Activate Emergency Guarantee

Make sure all mandatory field details are entered and agree with the Emergency Guarantee policy and press “Activate guarantee” button.

Note: Once the emergency guarantee is activated, all field changes must be requested manually to support@fronterax.io

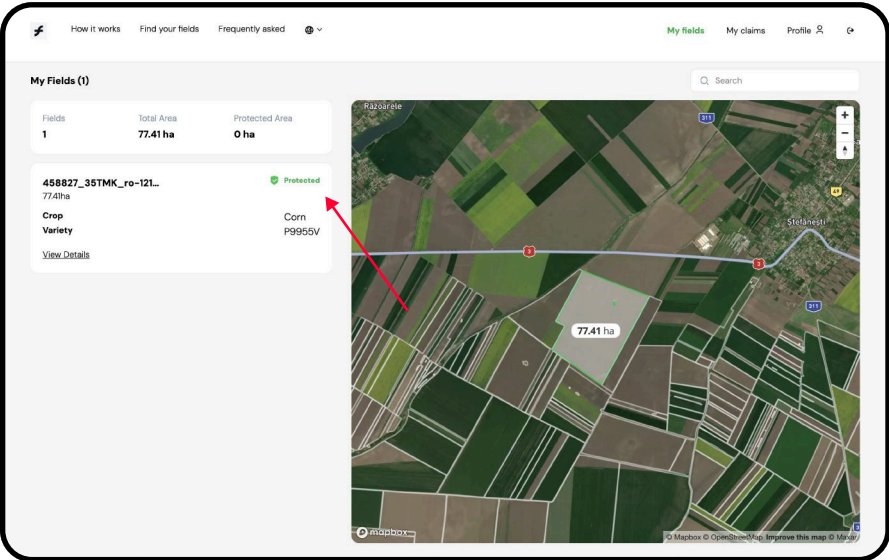
<https://frontera.digifarm.io/en/fields/{ID}/field-detail>



Step 7. Field is protected

Once Emergency Guarantee is activated, a green icon will appear next to the field card, indicating that the field is fully protected.

<https://frontera.digifarm.io/en/fields-overview>





How to File a Claim?

Step-by-step guide

frontera^x and Lumiposa[®] 625 FS
TRATAMENT INSECTICID SĂMÂNȚĂ

Step 1. Submit a claim for a damaged field

Filing a claim is possible when a field is registered and emergency guarantee is activated for it so double check if Emergency Guarantee is activated and press "File a claim" button.

<https://frontera.digifarm.io/en/fields-overview>



Step 2. Fill growing season details

Please provide information for all the selected fields: "Season", "Date of damage", "Scale of damage in %" and "Cause of damage".

<https://frontera.digifarm.io/en/fields-overview>

Step 3. Upload necessary documents and provide additional information.

Please provide all possible information that can speed up the process of reviewing your application and approving claims process.

<https://frontera.digifarm.io/en/fields-overview>

Note: it is mandatory to upload the corn acquisition invoice.

Field Profile

Basic Information

Name	Southwestern field
Size	3.25 ha
LPIS Unit Number	001-05-012
Field Ownership	Own field

Growing Season

Est. Planting Date	Specify
Crop Type	Corn
Hybrid Variety	Pioneer P285W
Bags of Seed	6 Bags

Insurance claimed in previous season

Not Claimed

Emergency guarantee

Active

Your field is protected with an Emergency guarantee.

[View policy](#) [File a claim](#)

Manage the field

Your field is protected with an Emergency guarantee.

[Delete field](#)

File a Claim

Basic Information

Name	Southwestern field
Size	3.25 ha
LPIS Unit Number	001-05-012
Field Ownership	Own field

Growing Season

Season	Spring 2026
--------	-------------

Date of damage

01/04/2026

Scale of damage (minimum 30%)

30

Cause of damage

Emergence

Add details

Type any details you find important here

Upload additional documents

[Upload necessary documents](#)

File a Claim

Basic Information

Name	Southwestern field
Size	3.25 ha
LPIS Unit Number	001-05-012
Field Ownership	Own field

Growing Season

Season	Spring 2026
--------	-------------

Date of damage

01/04/2026

Scale of damage (minimum 30%)

30

Cause of damage

Emergence

Add details

Type any details you find important here

Upload additional documents

[Upload necessary documents](#)

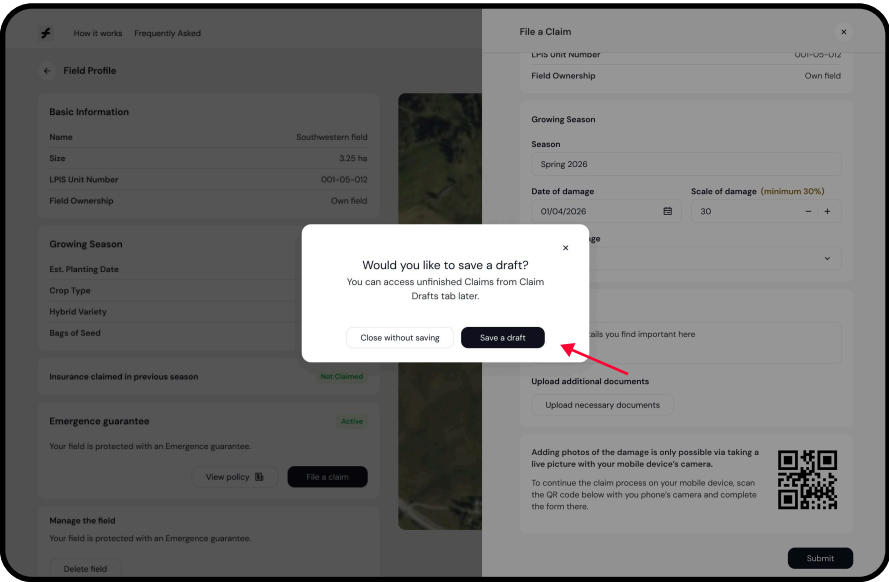




Step 4. Save your claim as draft.

You can continue submitting your claim later. It will be saved as a draft to “My Claims” section under Drafts. If a draft has been saved previously, it will open when the user returns later to submit the application.

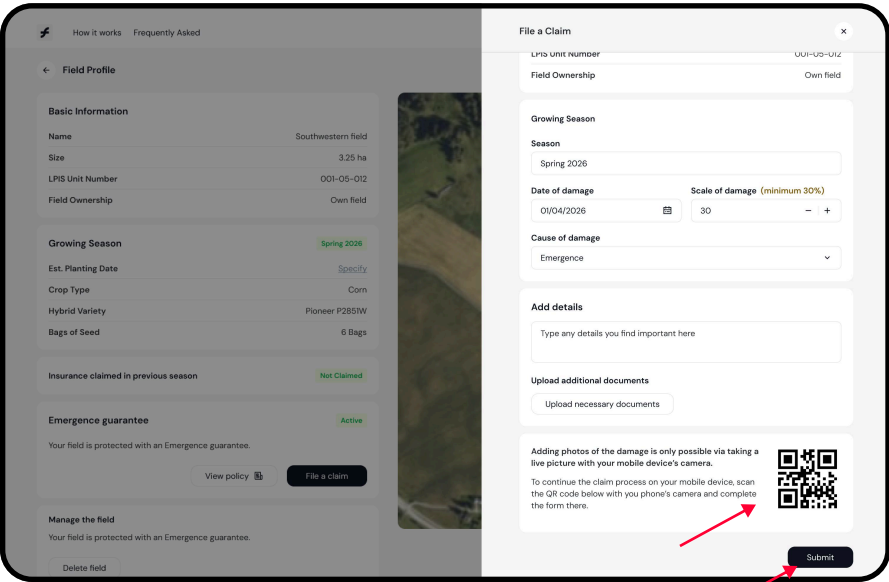
<https://frontera.digifarm.io/en/fields-overview>



Step 5. Attach geo-tagged photos of damage occurring in the field using your mobile phone.

To continue the claim process on your mobile device, scan the QR code below with you phone’s camera and complete the form there. After images are attached – press “submit” button.

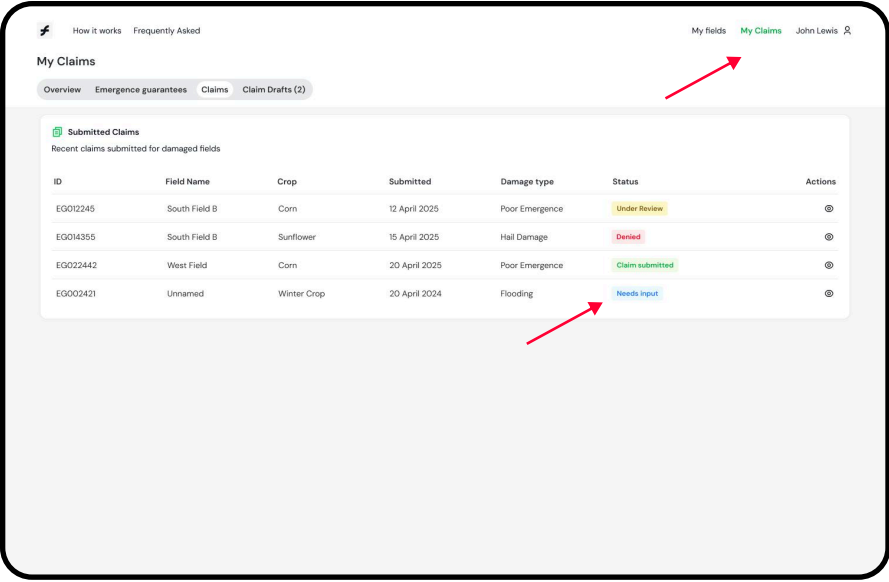
<https://frontera.digifarm.io/en/fields-overview>



Step 6. Check your claim status and provide additional details if needed.

You can check the status of your claim on the “My Claims” page. Sometimes we cannot process your application if you have not provided enough information. In this case, we will notify you of the need to update the information.

<https://frontera.digifarm.io/en/fields-overview>



Step 7. Completing the claim’s process.

Once our team has reviewed your claim thoroughly and all the information is sufficient to make a decision, claim status will change to "approved" or “declined”.

<https://frontera.digifarm.io/en/fields-overview>

